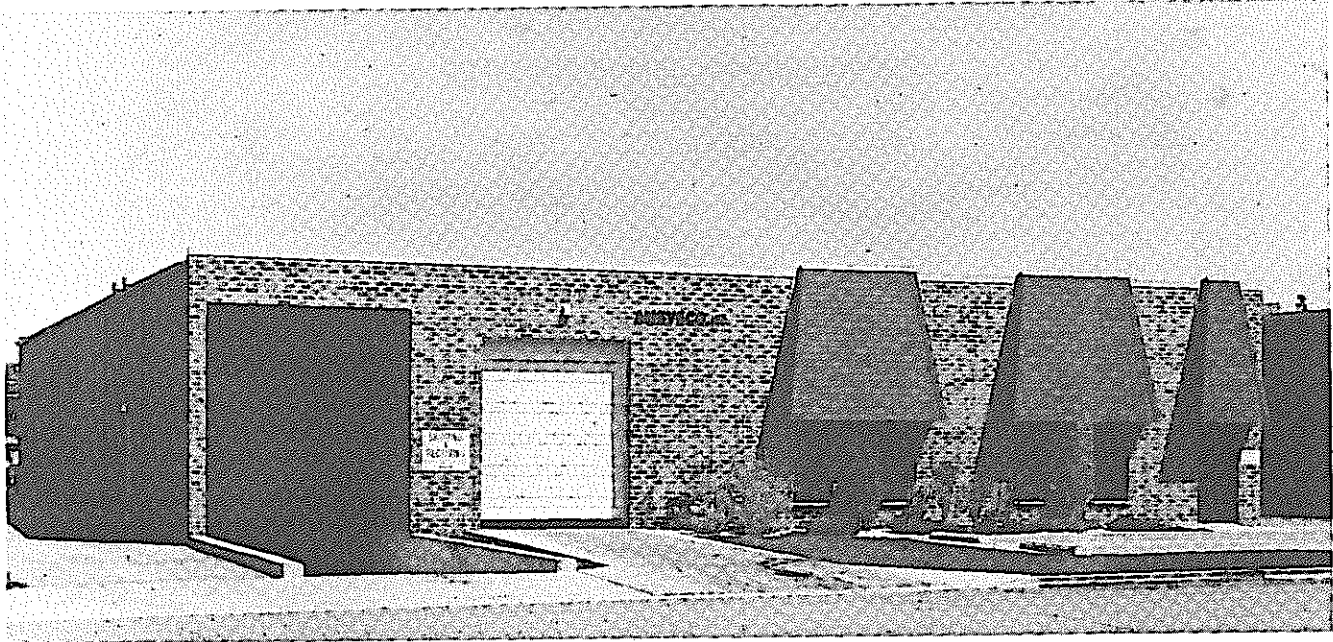


2.2.1 AMSYSCO, INC.



AMSYSCO, Inc. is a supplier of post tensioning systems and related services. The modern manufacturing plant and general offices are housed in the new brick and masonry building shown above within a 25 minute drive from downtown Chicago. The AMSYSCO material, services and applications are listed below.

A. To General Contractors:

- 270 ksi, 7 wire strand as per ASTM-A416 cut to length
- shop drawings, stressing calculations and mill test reports
- Stressing jacks and hydraulic pumps with calibration chart
- Support chairs for the tendons
- Technical field service
- Consultations to develop convenient and economical pour sequences
- On time delivery of material to the jobsite

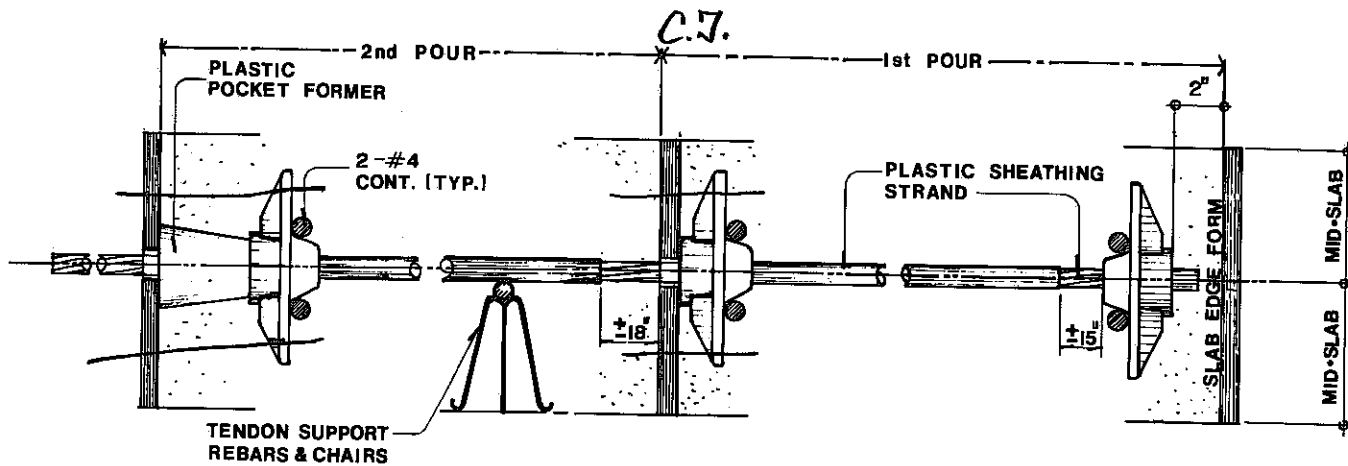
B. To Engineers, Architects and General Contractors

- Guaranteed proposal on DESIGN-BID projects
- Design assistance
- Expertise in developing the most economical concrete frames
- Cost estimates and guide specifications

C. AMSYSCO Applications

- High rise office and apartment structures
- Multi level parking garages
- Water tanks, silos and other storage facilities
- Industrial, residential construction and slab on grade
- Schools, gymnasiums, pavements
- Special applications

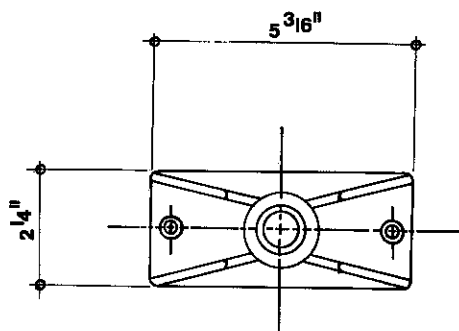
THE AMSYSO POSTTENSIONING SYSTEM FOR NORMAL ENVIRONMENTS



STRESSING END ANCHOR

INTERMEDIATE ANCHOR

DEAD END ANCHOR



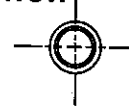
TOP VIEW - ANCHOR



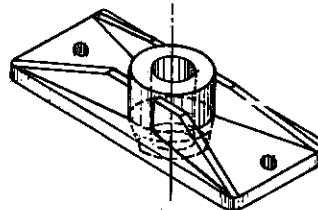
TOP VIEW WEDGE



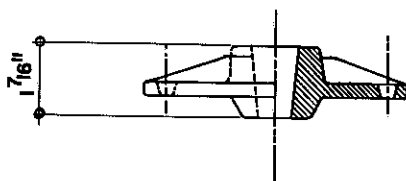
SIDE VIEW WEDGE



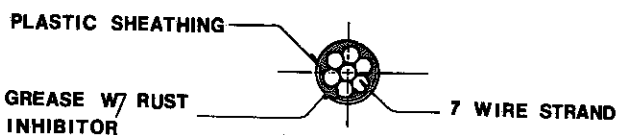
BOTTOM VIEW WEDGE



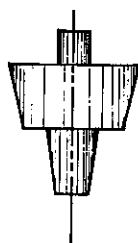
ISOMETRIC VIEW - ANCHOR



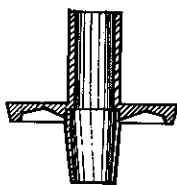
SIDE VIEW - ANCHOR



CROSS SECTION TENDON



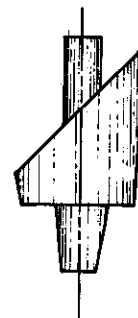
REGULAR POCKET FORMER



INSIDE VIEW



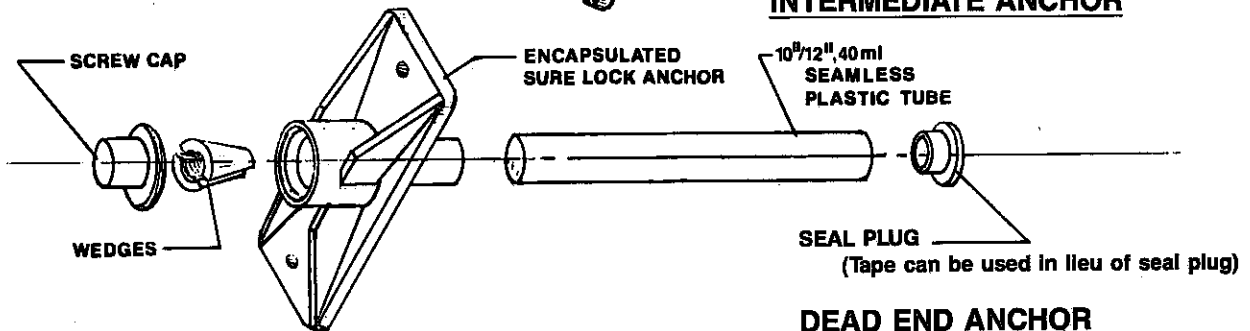
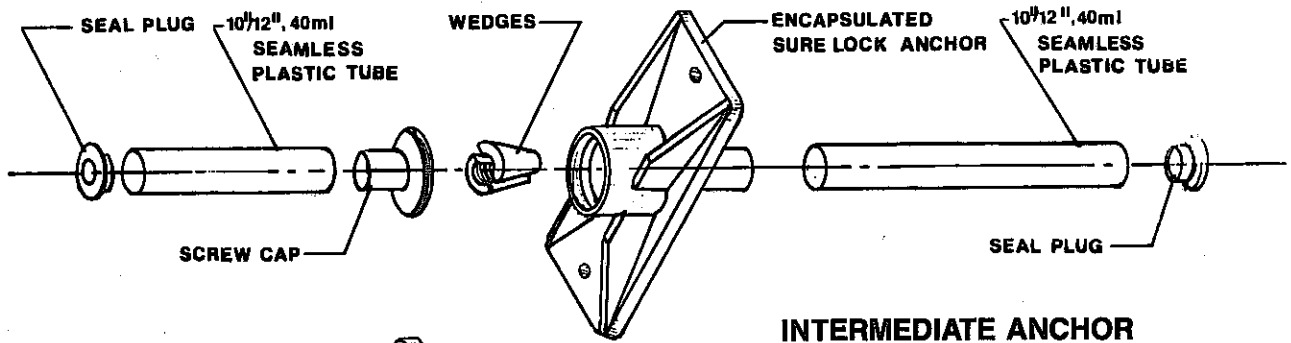
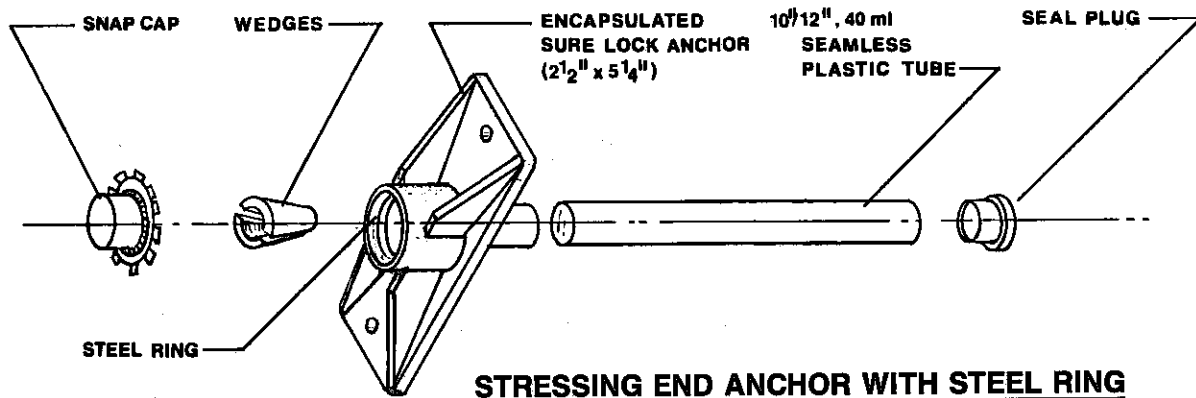
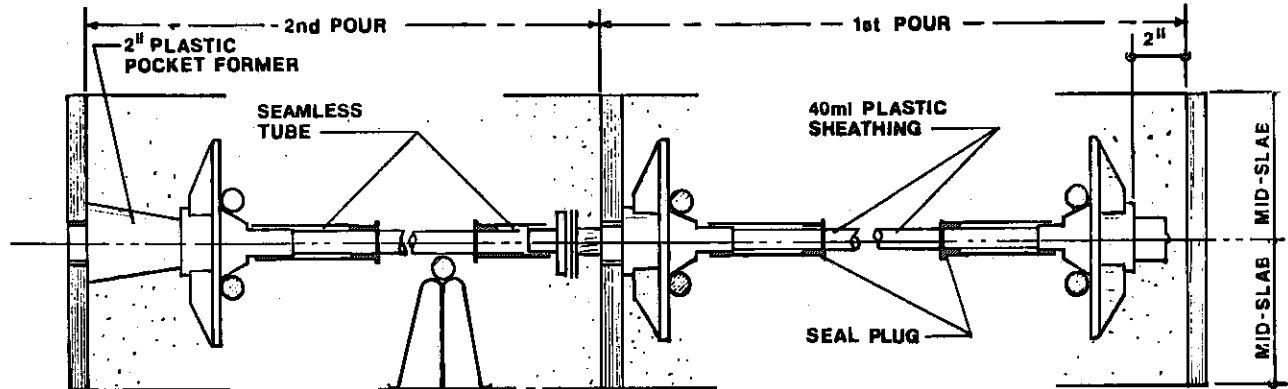
SIDE VIEW



45° POCKET FORMER

NOTE: AMSYSO, Inc. reserves the right to alter the systems shown at any time.

THE AMSYSCO POST-TENSIONING SYSTEM FOR CORROSIVE ENVIRONMENTS



NOTE: AMSYSCO, Inc. reserves the right to alter the systems shown at any time.

2.2.1 AMSYSCO, INC. — continued

AMSYSCO Monostrand Systems

The AMSYSCO monostrand system utilizes 0.5 inch dia., 7 wire strand manufactured as per ASTM-A416. The strand is made from low relaxation steel. The strand is coated with rust inhibiting grease prior to being encased in a durable extruded plastic sheathing. Dead end anchors are attached to the tendons in the plant and intermediate anchors are placed in their proper location for field installation. The tendons are cut to length, coiled, tagged and color coded for easy identification prior to shipping to the jobsite. The stressing jacks and hydraulic pumps are accurately calibrated in our plant. Our plant is certified under the PTI Plant Certification Program. We manufacture our product strictly in accordance with PTI specifications for unbonded monostrand systems on a daily basis.

TECHNICAL DATA

1. Strand

Nominal diameter:	0.5 inch	Modulus of elasticity (E):	28 x 10 ⁶ psi
Ultimate strength:	41.3 kips	Maximum force at stressing:	33 kips

2. Anchor

We supply either our own AM7 or the Sure-lock anchor.

<u>AM7</u> Dimensions:	2.25 in. x (5-5.1875 in.)	<u>Sure-lock</u> Dimensions:	2.25 in. x 5 in.
Cross section area:	11.67 sq. in.	Cross section area:	11.25 sq. in.
Minimum strength of concrete at stressing = 2100 psi (Recommended 3000 psi)			

3. Wedges

The two piece wedges are made of high strength steel which has been properly heat treated.

4. Grease

The grease is compounded from highly refined petroleum oils and long chain metallic hydrocarbons. It is designed to provide a rust protective coating that is both flexible and stable from below 0°F (-17.8°C) to 300°F (148.9°C). Our grease meets or exceeds PTI specifications.

5. Plastic sheathing

The 25ml. thick plastic (for regular systems) and 40ml. thick plastic (for encapsulated systems) is extruded by a state-of-the-art extrusion process. This plastic is durable and withstands handling during transportation and construction.

6. Stressing jack - hydraulic return type

The jack is of one-piece construction from custom forged aircraft industry quality steel. It weighs only 38 pounds with a 3 inch standard nose. The stroke of the jack is 8.5 inches and a hydraulic seating device is utilized.

7. Hydraulic pump

The hydraulic pump (OTC) is equipped with 10,000 psi pump, universal motor (1-1/8 h.p., 12,000 r.p.m., 115 volt, 60/50 cycle A.C. single phase, draws 27 amps at full load).

NOTE: AMSYSCO, Inc. reserves the right to modify or change the product or the manufacturing process at any time.

2.2.1 AMSYSO, INC. — continued

AMSYSCO PROJECTS

PROJECT	DESCRIPTION	STRUCTURAL ENGINEER
North Loop Trans. Ctr. (31 Floors) Chicago, IL	1,250,000 sq. ft.	Skidmore, Owings & Merrill Chicago, IL
McDonald's Corporate Office Building Oak Brook, IL	1,000,000 sq. ft.	Chris P. Stefanos Assoc. Chicago, IL
Washington Street Parking Garage Indianapolis, IN	1,200,000 sq. ft.	Monical Associates, Inc. Indianapolis, IN
Central Trust Office & Parking Cincinnati, OH	800,000 sq. ft.	Skidmore, Owings & Merrill New York, NY
Downers Grove Office Development Downers Grove, IL	500,000 sq. ft.	Chris P. Stefanos & Assoc. Chicago, IL
Indianapolis Airport Garage Indianapolis, IN	750,000 sq. ft.	Fink, Roberts, Petry Indianapolis, IN
Kansas City Place Office & Parking Kansas City, MO	800,000 sq. ft.	
Milwaukee Theatre Dist. Office & Hotel Milwaukee, WI	700,000 sq. ft.	Skidmore, Owings & Merrill Houston, TX
Tampa Rehabilitation Trans. Center Tampa, FL	460,000 sq. ft.	Reynolds, Smith & Hills Tampa, FL
Miami International Airport Pkg. Garage Miami, FL	600,000 sq. ft.	Professional Eng. Spec. Team Miami, FL
Athletic Facility Stadium Miami, OH	Multistrand System in Beams	Osborn Company Cleveland, OH
Embassy Suites Hotel Southfield, MI	225,000 sq. ft.	Rittweger & Tokay Chicago, IL
Manchester Place Office & Parking Madison, WI	225,000 sq. ft.	Arnold & O'Sheridan Madison, WI
Two Parking Structures/Univ. of Missouri Columbia, MO	400,000 sq. ft.	Desman Parking Associates Chicago, IL
Northpoint Parking Garage Cleveland, OH	225,000 sq. ft.	Asamato-Shenberger & Assoc. Brecksville, OH
Centerpiece Radisson Hotel Rochester, MN	170,000 sq. ft.	Hammel Green & Abrahamson Minneapolis, MN
Louisville Gardens Parking Garage Louisville, KY	175,000 sq. ft.	Luckett & Farley Louisville, KY
Hermitage Apartment Building & Parking Garage (29 Floors) Chicago, IL	400,000 sq. ft.	Beer, Gorski & Graff Chicago, IL
Becketwood Cooperative Housing Apts. Minneapolis, MN	380,000 sq. ft.	Hammel Green & Abrahamson, Inc. Minneapolis, MN
St. Louis Center Parking Garage St. Louis, MO	550,000 sq. ft.	Siebold, Sydow & Elfanbaum, Inc. St. Louis, MO
St. Francis Greenleaf Parking Deck Peoria, IL	214,000 sq. ft.	Walker Parking Consultants Elgin, IL
South Roof at Stacy Reservoir St. Louis, MO	210,000 sq. ft.	Horner & Shifrin St. Louis, MO
Rockwell Office Building Westmont, IL	325,000 sq. ft.	Chris P. Stefanos & Assoc. Chicago, IL
Madison-Wells Parking Garage Chicago, IL	500,000 sq. ft.	Desman Parking Associates Chicago, IL
Mall 'A' Parking Garage Cleveland, OH	288,800 sq. ft.	Walker Parking Consultants Kalamazoo, MI
Arch Parking Garage St. Louis, MO	400,000 sq. ft.	Harold Belzer Minneapolis, MN
Headquarters Office Building Louisville, KY	170,000 sq. ft.	Luckett & Farley Louisville, KY
Iroquois Club Apartments Naperville, IL	325,000 sq. ft.	Sheffee Lulkin & Assoc. Chicago, IL

2.2.1 AMSYSCO, INC. — continued



North Loop Transportation Center, Chicago, Illinois